

Mission for the Millennium

Facts

IHM Motherhouse Environmentally Sustainable Design

Vision of sustainability with practical and real expressions

Environmentally responsive sustainable design means:

- Choosing to renovate, not build a new structure; reducing impact on environment
- Reusing and recycling of materials
- Installing energy-efficient HVAC systems
- Choosing passive natural energy systems
- Reducing dependence on non-renewable energy sources
- Designing indoor and outdoor space that promotes sustainable community
- Using products that will reduce our footprint and impact on the environment
- Restoring the site

Reused and recycled materials

- Motherhouse wood windows (approximately 800) restored / reused
- Doors (entry, closet, 60+ cedar cabinets, 15 wood bathroom stalls)
- Wood trim, wood wainscoting, parquet floors
- Salvaged marble pieces used for countertops on cabinetry and windowsills

- Over 100 existing period light fixtures retrofitted
- Topsoil removed during the earthwork reused in the landscaping
- 45,260 sf carpet reclamation: one-half went to a non-profit organization; the other half went to an incinerator; none went to a landfill
- Ann Arbor Reuse Center: removed used but still useful building materials like sinks, toilets, wiring, duct work
- Mass demolition contractor selection criteria included plaster recycling capability
- Recycled materials throughout construction

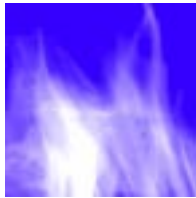
Energy-efficient HVAC systems

- Geo-thermal system for heating and cooling with a terminal unit in every room is the basic energy-conserving system
- Heat recovery system: reclaims heat from exhaust from ductwork, tempers outside cold air and reuses in outside air ducts
- Water conservation:
 - Fresh-water consumption lowered by 35%
 - Low-flow / water-conserving fixtures and fittings
 - Anti-scald shower and bath fittings (thermal energy conservation)

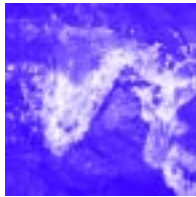
continued on back



earth



fire



water



air



spirit

